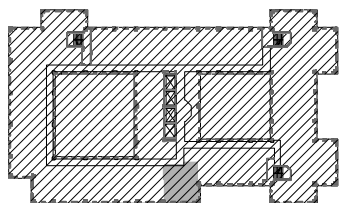
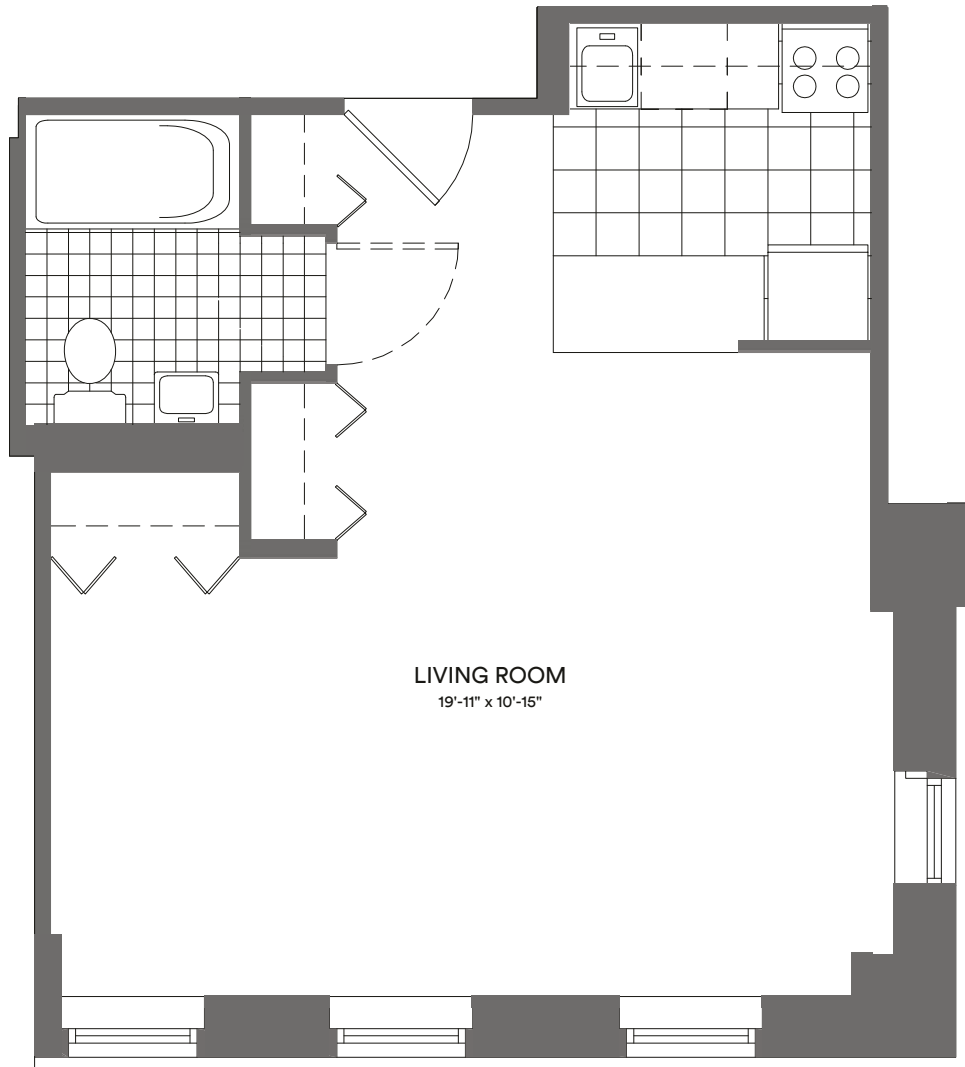


# L LINE STUDIO

**SLOANE**  
CHELSEA NYC

5th - 13th Floor



LIVING ROOM  
19'-11" x 10'-15"



All dimensions are approximate and are subject to construction variances.  
Plans and dimensions may contain minor variations from floor to floor.

360 West 34th St | New York, NY, 10001 | (212) 402-3606

[www.sloanenewyork.com](http://www.sloanenewyork.com) | [rent@sloanenewyork.com](mailto:rent@sloanenewyork.com)